

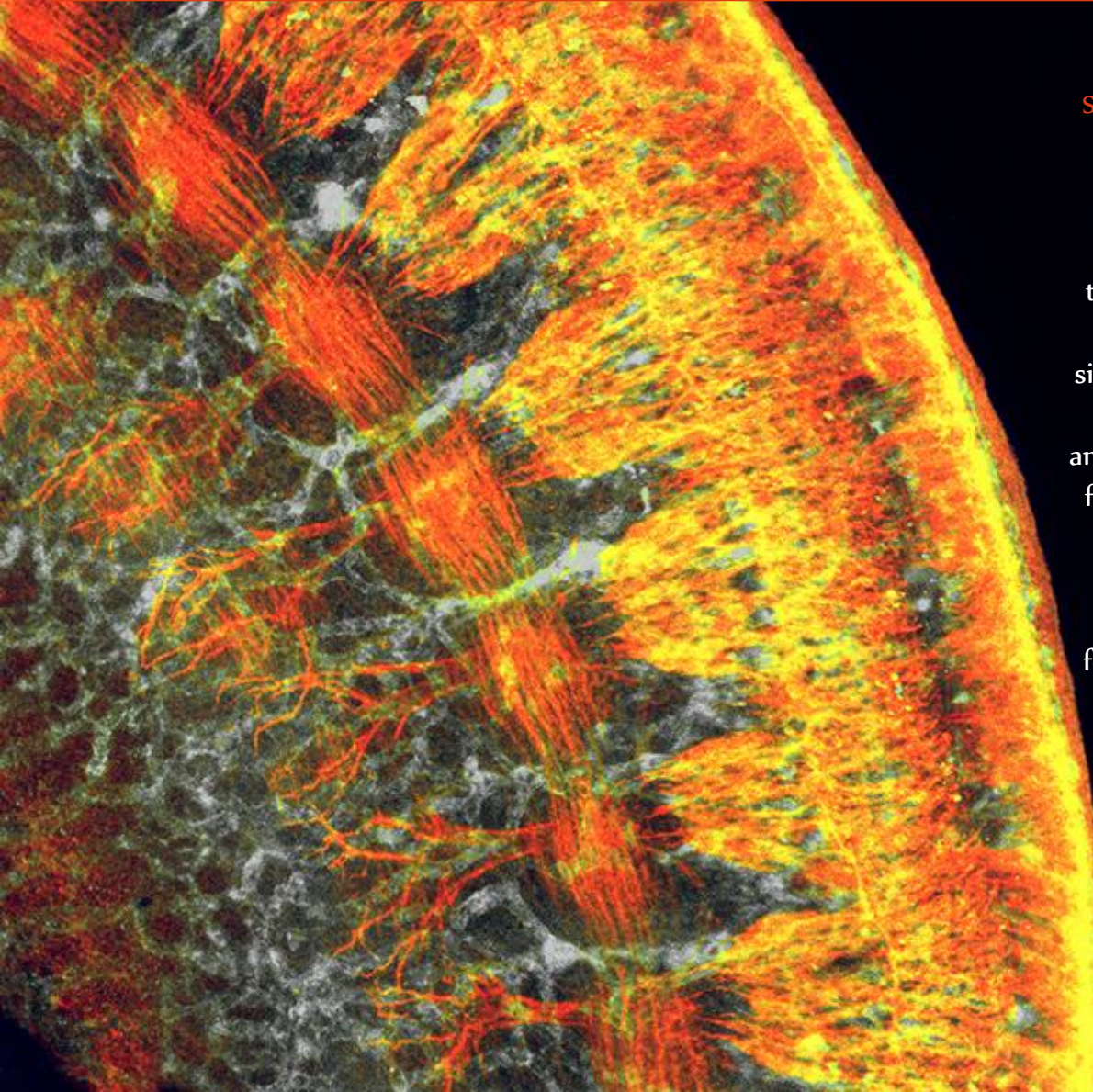
1k

in

2016

Dathak wishes you...

Cold blood and vibrant nerve connections



Shachi Bhatt* and Paul Trainor†
Stowers Institute for Medical Research, Kansas City, MO

Research Focus: Developmental biology

Blood vessels and nerve cells run in parallel through the body and are dependent upon each other for proper function. They also follow similar early developmental paths, as seen in this image of an embryonic mouse torso. Drs. Bhatt and Trainor are studying these parallel pathways, focusing on a molecule implicated in controlling genes during the early development of blood vessels (gray) and nerve cells (red). Detailed knowledge of normal developmental processes forms a critical foundation for research on birth defects and other diseases affecting the development of these organ systems.

*Genetics Society of America
†American Association of Anatomists, Society of Developmental Biology

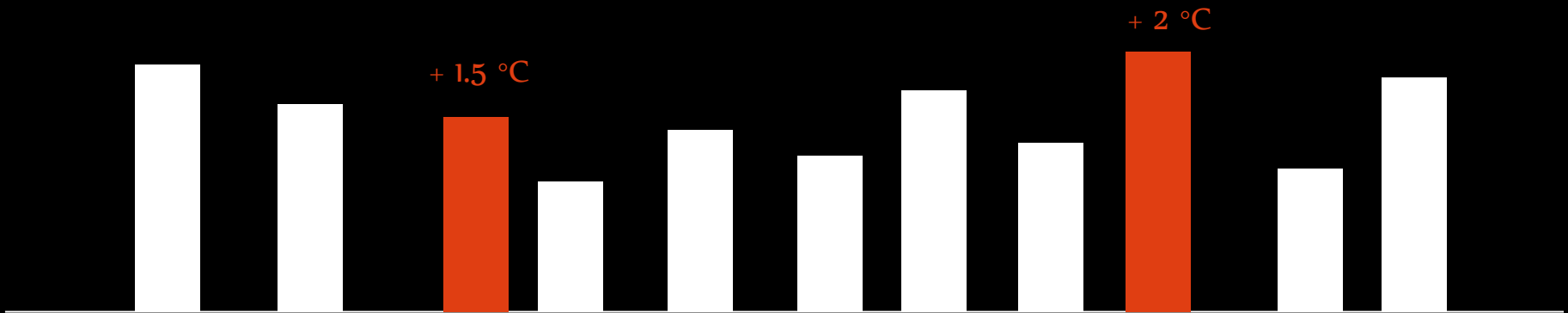
Source:

<http://www.faseb.org/Resources-for-the-Public/Scientific-Contests/BioArt/2015-BioArt-Winners.aspx>

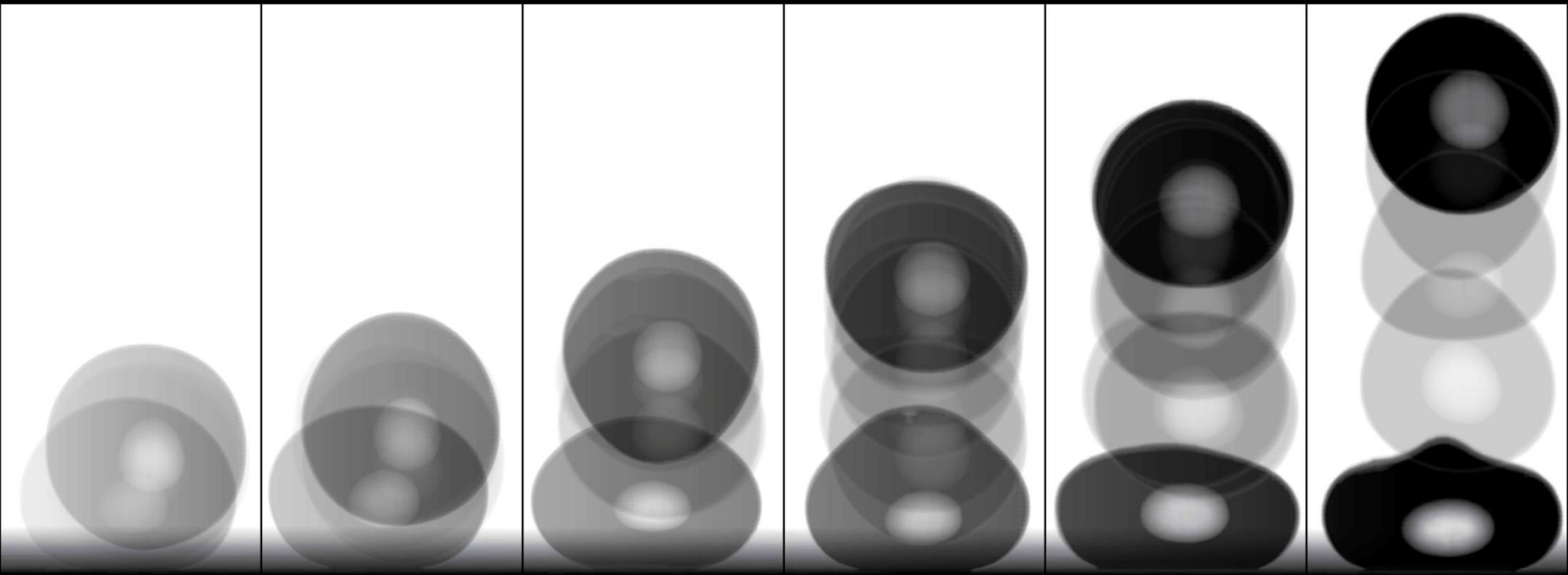
The right temperature

“There are two ways to reach a cooler water temperature when showering. You can either turn up the cold water tap or turn down the hot water tap.”

Roger Confucius
Chief technology and innovation officer
Dathak



Bouncing energy without fossil fuel



Trampolining water droplets

Sequential shots with a high-speed camera show how the height of a bouncing water droplet increases constantly.

(Image: Tom Schutzius / ETH Zurich)

Source: <https://www.ethz.ch/en/news-and-events/eth-news/news/2015/11/trampolining-water-droplets.html>



Water & Wastewater Expertise

David Thauré

Founder and manager

7 allée Jullian, 34000 Montpellier, France

Mobile +33 (0)6 14 86 67 20 | Office +33 (0)4 67 02 00 31

davidthaure@dathak.com

www.dathak.com